

CERTIFICATE OF LOCATION OF GOVERNMENT CORNER

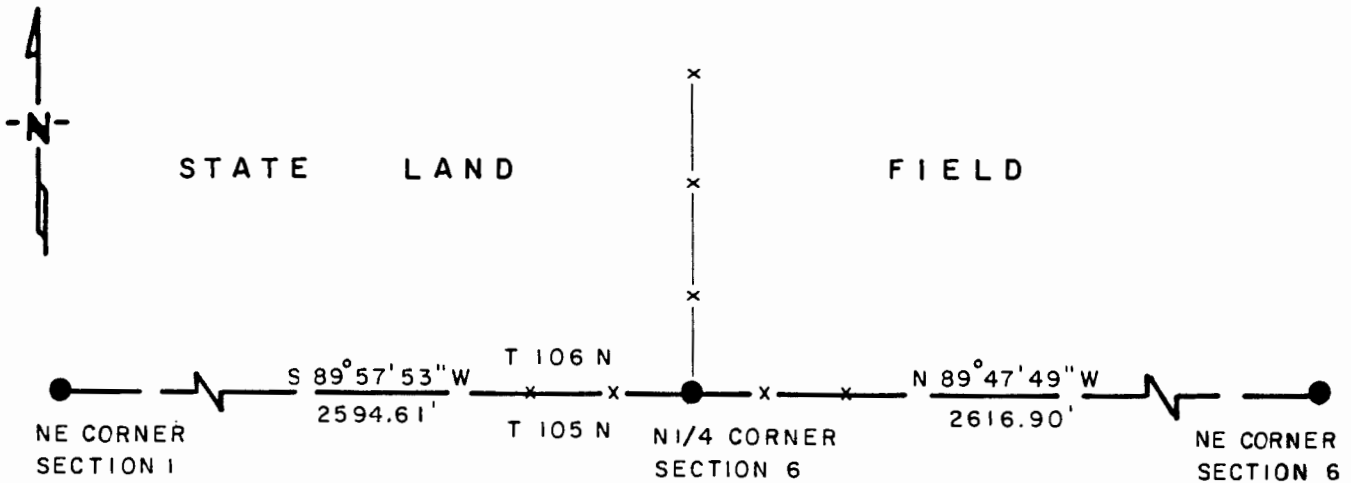
NORTH QUARTER Corner of Section 6, Township 105 N, Range 42 W, 5th P.M.

STATE OF MINNESOTA, County of MURRAY

At the corner location shown on the sketch

- On 6-13-91 found a 3/8" IRON ROD, FLUSH
DATE
- left monument as found, lowered monument, removed monument (explain)
- On 6-13-91 placed a 1 1/4" x 1 1/4" x 20" PERFORATED STEEL TUBE WITH ALUMINUM CAP STAMPED "DNR SURVEY MARKER". OVER IRON ROD
DATE

SKETCH OF REFERENCE TIES



NOTE:
 MONUMENT IS
 IN LINE WITH FENCE E-W-N FIELD
 NO GOOD TIES AVAILABLE

1983 MURRAY COUNTY
 COORDINATE SYSTEM
 N = 131,917.671
 E = 455,944.148

BEARINGS ARE IN COUNTY ORIENTATION

Statement of evidence relative to this corner location is on back of page

J.B.M. 7-9-91
 WMA 12.00.00.01

I hereby certify that this document and the data contained herein was prepared by me or under my direct supervision.

Russ W. Sheppard 8-12-91
SIGNATURE DATE

Registration No. 17003
 Land Surveyor, Professional Engineer
 County Surveyor, County Engineer

OFFICE OF THE COUNTY RECORDER
 County of MURRAY

I hereby certify that this document was filed in the Co. Recorders office at _____ M. on the _____ day of AUG 15 1991 A.D., 19____
 County Recorder James V. Johnson
 By _____, Deputy

DOCUMENT NO. _____

North Quarter Corner of Section 6, Township 105 North, Range 42 West

The DNR Bureau of Engineering contacted the following for survey information:

Mn Secretary of State's Office
Murray County Recorder's Office and Highway Engineer's Office
Mn/DOT Office in Willmar
Mn/DOT Office in St. Paul
Sioux Engineering of Windom
Sioux Engineering of Tyler
Madsen Land Surveying of Fairmont
Madsen Land Surveying of Worthington
Rieke Carroll Muller Associates of Gaylord

- 1861 U.S. General Land office notes obtained from the Secretary of State's Office show the corner marked with a post and deposited charcoal in a mound of earth and sod with trench and pits as per instructions.
- 1900 Surveyor's Record Book A, page 101, obtained from the County Recorder's Office contains a survey by J. W. Woolstencraft. This survey is also contained in a Surveyor's Record Book obtained from the County Highway Engineer's Office. Survey shows that the government mound and pit were found at corner. The corner is shown:
2640 feet from the northeast corner of Section 6
- 1953 DNR Bureau of Engineering used the intersection of fences north, east, and west as the location of the corner. A description of what was set to mark corner is not given.
- 1973 DNR Bureau of Engineering set a 3/8 inch diameter by 2 foot long iron rod for corner at the intersection of fences north, south, east, and west. The following ties were taken to the iron rod:
nail and bottle cap in gate post, west, 17.10 feet
nail and bottle cap in gate post, north, 1.75 feet
nail and bottle cap in fence post, northeast, 0.60 of a foot
2616.91 feet from the northeast corner of Section 6
2597.45 feet from the northwest corner of Section 6
- 1979 DNR Bureau of Engineering found and used the iron rod set for corner in 1973.
- 1991 June, DNR Bureau of Engineering found the iron rod set for corner in 1973. Searched for but found no evidence of the 1973 ties. The iron rod was found to be:
2616.90 feet (2640.00' GLO) from the northeast corner of Section 6
2594.62 feet (2570.04' GLO) from the northwest corner of Section 6

Analysis of the above information led the DNR Bureau of Engineering to conclude that the iron rod at the intersection of fences marks the obliterated location of the corner.